

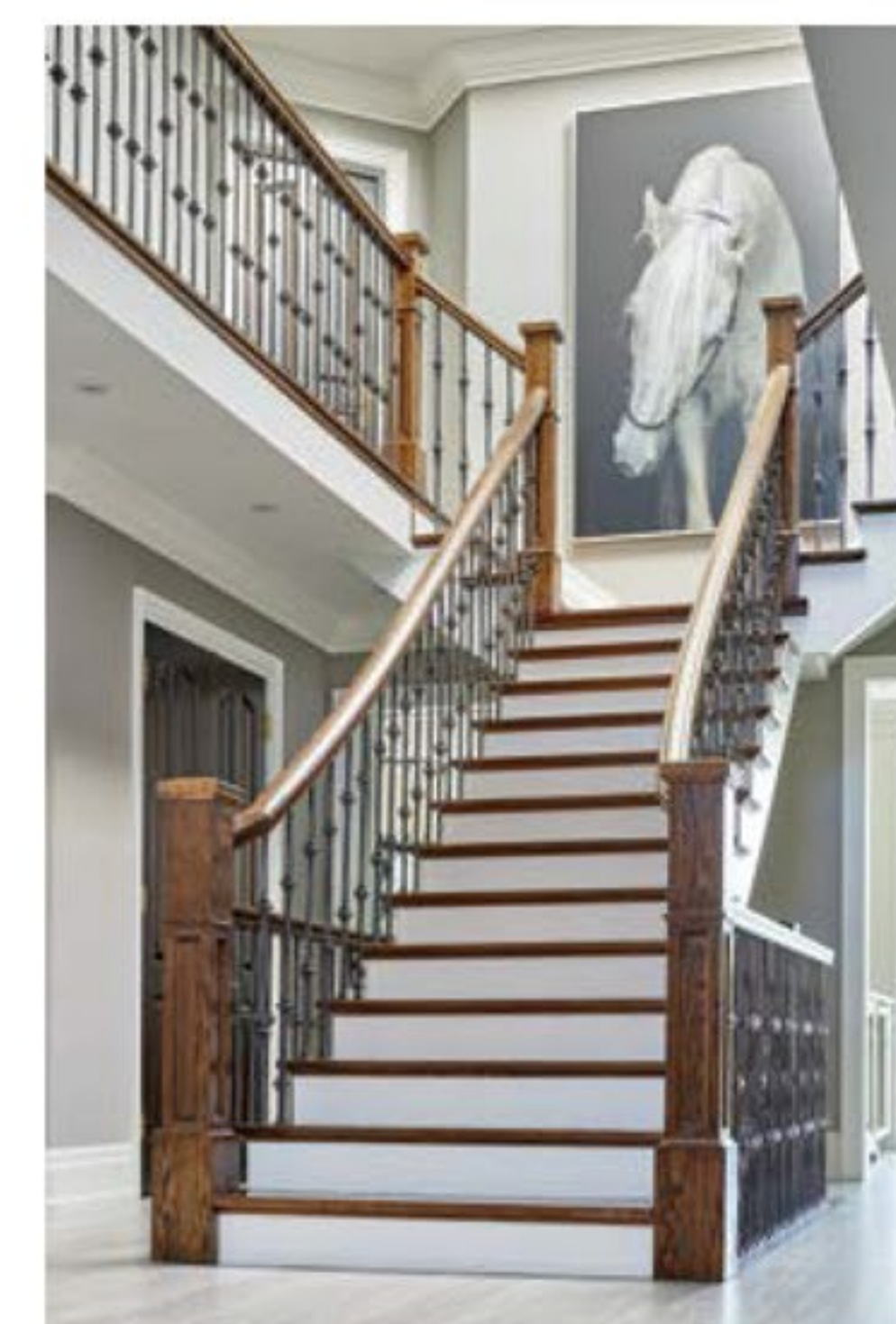


SO Sophisticated

STORY CATALINA MARGULIS | PHOTOGRAPHY JASON HARTOG



ABOVE: The soaring ceiling height adds an opulent feel. **TOP RIGHT:** An exclusive, hand-carved Christopher Guy console table and mirror graces the entrance. **RIGHT:** A bifurcated staircase is an eye-catching element on the main floor. **OPPOSITE:** The outdoor view is a lush backdrop for the dining area in the kitchen.



THEY SAY GROWING UP IS HARD TO DO, BUT FOR NIVES AND ATTILIO AND THEIR THORNHILL, HOME, IT'S BROUGHT ALL KINDS OF EXCITING CHANGE. WITH THEIR THREE DAUGHTERS GROWN AND A SON IN HIS LAST YEARS AT HOME, THEY FELT IT WAS TIME TO EMBARK ON A FULL HOME RENOVATION TO TAKE THEM THROUGH THE NEXT 25 YEARS.

"As our family has grown and our needs have changed, we've changed our home for better use of space for what we need now, as a more mature family," says Nives, of their two-storey, four-bedroom, 4,000 sq. ft. home.

To make their vision come true, the couple brought in design team **Luisa Maringola** and **Marisa Lupo** of **Lumar Interiors**. They also hired **Kevin McAleese** of **Perma-Wood** to spearhead the construction.

Continued on page 58

feature

A long-standing client, the designers first worked with the couple to select furniture and drapery for their family room 20 years ago. With their children now grown, they felt it was time for a more sophisticated aesthetic.

First stop: the kitchen. The couple likes to entertain and needed the space to accommodate bigger groups. To increase the footprint and facilitate Nives and Attilio's vision, Perma-Wood designed an addition, moving the back wall out to take advantage of the space over the veranda. A single pane picture-frame window now offers a spectacular view. "In the morning we both don't want to leave our home," says Attilio. "It's very relaxing. I feel like I'm in California every time I look out the back window."

Since the dining room functions as a piano room, the kitchen is where the family enjoys all their meals. "We made sure we provided them with a really big table that can seat 12 to 14 people comfortably," says Luisa, of the solid wood, reclaimed, live-edge kitchen table with steel base. A chandelier from **Prima Lighting** completes the space.

The custom island, created by **Stutt Kitchens & Fine Cabinetry** and featuring a Cambria quartz countertop, is also a standout. "It's the focal point, after the picture frame view. Whenever people come to the kitchen, they gravitate to the island," Attilio says.

To make the kitchen even more amenable to hosting, they also opened it up to the family room. "The family room is an extension of the kitchen if you need it for entertaining, but when you need to be private, there are pocket doors, so you have that option as well," says Nives, adding that they recently had a luncheon with 50 people. "It flowed very well between both rooms."

Continued on page 60



The updated kitchen incorporates contemporary yet timeless finishes that will stand up to years of use. **OPPOSITE, TOP:** The family often hosts, so a spacious kitchen and large island were a must. **BOTTOM LEFT:** The pièce de résistance in the solarium-style dining area is the picture window.





RIGHT: A more formal room in the home, the living room dazzles with layers of colour and texture. **BELOW:** The dining room was eliminated in favour of a piano that now takes centre stage.



As for the home's overall aesthetic, "We wanted a relaxed, welcoming feel but updated, with new colours," says Nives. Blues and greys create a soothing palette. "It gives a relaxed feel but it's elegant at the same time."

New porcelain tiles from **Cercan Tile** were installed from the front of the house to

the kitchen. "The linear look of these oversize tiles actually makes the house look bigger. They look great," says Attilio.

The existing wood floors were sanded and stained a darker, more contemporary tone, and the staircase pickets were swapped for wrought iron.



Elsewhere, the office was redone with new built-ins from Stutt Kitchens, who also supplied the custom cabinetry in the family room and kitchen. The living room at the front of house was opened up to make a joint piano and sitting room. "The office used to be a playroom when the kids were little, and the living room was used as an office. Now it's back to the original intention," says Luisa. Crown moulding and a ceiling treatment from **Omega Mantels & Mouldings** were added. To freshen up the piano room, Luisa and Marisa took the two ornate accent chairs and had them reupholstered in a fun, colourful fabric.

Continued on page 62

LEFT: Custom integrated cabinetry in the office maximizes the space. **BELOW LEFT:** Pretty floral wallpaper adds a playful touch to the powder room. **BELOW:** The living room is elegant yet still comfortable enough to linger in.





The main-floor powder room was also updated with a custom vanity and wallpaper, as were the bathrooms upstairs, including one for their son and another for their three daughters.

"Our son's bathroom is more masculine now. It has rare tiles from Italy (Cercan Tile), with Italian literature built in to the tile," says Attilio.

The girls' bathroom features heated floors, a double sink, makeup table, soaker tub and walk-in shower, as well as a cathedral ceiling for a spa-like feel. "We wanted to make everyone happy, so they each picked a component and Luisa helped incorporate those elements into the bathroom," says Nives. *Continued on page 64*

*"In the morning,
we both don't want
to leave our home."*



Beautiful blues and warm wood hues create a cosy, casual family room. Just off the kitchen, it's the perfect location for extending space when hosting larger groups.



ourhomes

T O R O N T O & Y O R K R E G I O N

While the couple avoided the “don’t touch” feel with the redesign, the home features some great showpieces, such as the Decorative Crafts coffee table in the living room and the showstopper Christopher Guy console table and mirror in the front vestibule. “It’s luxurious and exclusive, hand carved – you won’t see it everywhere,” says Luisa.

It all adds up to a home befitting a mature couple, that’s still accessible and welcoming for their kids and guests. “The kids come up on the weekends and they love it; it’s like going to Muskoka for them,” says Attilio. We’re sure their parents are enjoying it too. **OH**

LEFT: In the large bathroom shared by the couple’s three daughters when they are home, stone-like tile is an interesting detail with a hint of shine. **BELOW:** No one needs to wait their turn. A double sink and makeup vanity provide plenty of space.

ATRIUM ADDITION

FRANK LLOYD
WRIGHT *inspired
reno*

MAKING BRIGHT
WHITE FEEL WARM

“As our family has grown and our needs have changed, we’ve changed our home for better use of space for what we need now, as a more mature family.”

CREATIVE
SURFACESFIRESIDE
DESIGNsavory
PUMPKIN
SOUPGIVING
THANKS