

HOLIDAY/WINTER 2016/17

STYLE ■ COMFORT ■ IDEAS ■ REAL ESTATE

# ourhomes

Y O R K R E G I O N

OLD  
SPACE  
NEW  
CHARM

DESIGN  
EXPERTS

HOLIDAY STYLE  
INSPIRATION

KING CITY  
*masterpiece*

[ourhomes.ca/york](http://ourhomes.ca/york)

+

WHISK PICKS  
LOVE YOUR  
LIGHTING



# CLASSIC *Style*



STORY **GINA MAKKAR**  
PHOTOGRAPHY **JASON HARTOG**



Zesty colour adds warmth in the great room, and cascading taupe drapes help connect the soaring ceiling height to the rest of the space.  
**OPPOSITE, TOP LEFT:** The pretty piano room glimmers with gold accents. **BOTTOM LEFT:** A glam mirrored table fills an unused space behind the french door. **RIGHT:** Get swept away by the music while lounging on this sweet sofa.

Timeless design is understated, simple and sophisticated, but it doesn't have to be bland and boring. Take a peek inside Patricia Wong's home, where classic blends with hints of contemporary for a balance that's functional and beautiful.

Continued on page 24





**LEFT:** A more traditional aesthetic adds formality to the dining room. **BELOW:** Candelabra-style pendants add a strong architectural element over the island. **BOTTOM:** Hints of gold connect the powder room to the rest of the home. **OPPOSITE, TOP:** Integrated appliances maintain the fresh white furniture-style look. **BOTTOM:** A small dining area looks on to the great room and beautiful backyard.



When the Wongs began their custom build with **Walter** and **Tony Pontiero** of **King Station Inc.**, they chose King City, a location with a convenient commute to work and the cottage. "King Station truly are master builders," says Patricia. "Walter and Tony are very meticulous and take pride in what they do. This is reflected in the homes they build."

The homeowners brought in designer **Marisa Lupo** of **Lumar Interiors** to help plan the interior finishes while the 5,400 sq. ft. home was still under construction. Marisa and partner **Luisa Maringola** work together to dream up beautiful interior designs.

The Wongs had worked with Lumar Interiors on their two previous homes, and

Marisa says knowing their taste made it easy to offer plenty of options she knew they would love. "We go back 20 years, and we are loyal, repeat customers of Lumar Interiors. From colour selection to window coverings to furniture and everything in between, they make our house a home," says Patricia.

Marisa helped select finishing touches that honour the couple's classic leanings. "Patricia has always gravitated to a classic aesthetic," Marisa says. "She loves furniture that looks timeless. She loves beautiful lines in furniture and appreciates beautiful fabrics. The lighting and custom drapery honoured this vision. The light fixtures are not trendy, but rather timeless, and the drapery fabric is, too."



Furnishings chosen with Lumar a few years prior were brought to the new home, and though one might wonder how older pieces would work in a new aesthetic, the effect is beautiful. Each piece was thoughtfully considered and placed with purpose, and looks like it's always belonged there.

A formal living room and a piano room border the main hallway. The high-gloss black piano shines among gold and burnt orange accents for a rich, luxe space to play music. Across the hall, hints of gold in the curved coffee-table base and the starburst mirror tie the rooms together. Here, softly fringed sofas are accented with teal lamps. Tangerine accents pull from the intricate border on the sweeping Italian strung drapery.

Wainscoting brightens the main floor and adds definition. Oversize marble tiles continue to the centre of the home where a stacked

*Continued on page 27*





staircase with open risers leads to the upper and lower levels. The deep espresso stain adds richness and anchors the staircase to the hand-scraped hardwood throughout. Rugs from **Weavers Art** add texture.

In the kitchen, the dark island provides contrast to the bright white cabinetry from **Iripinia Kitchens**. A tumbled marble backsplash in cream tones provides warmth. A Statuario Quartex countertop adds texture and dimension. Bronze candelabra-style pendants above the island tie the lighting to the rest of the home. A playful pattern on the island stools adds a punch of colour. A circular pedestal table in the dinette area is accented with a blue area rug and chair covers. Softly patterned drapes complete the space. "The kitchen is large and functional, perfect for preparing delicious meals," says Patricia.

The kitchen opens to the great room, where soaring ceilings and plenty of windows filter light. Here, energizing red draws visitors in. A variety of patterns and textures allow the vibrant colour to remain bold but not overreaching.

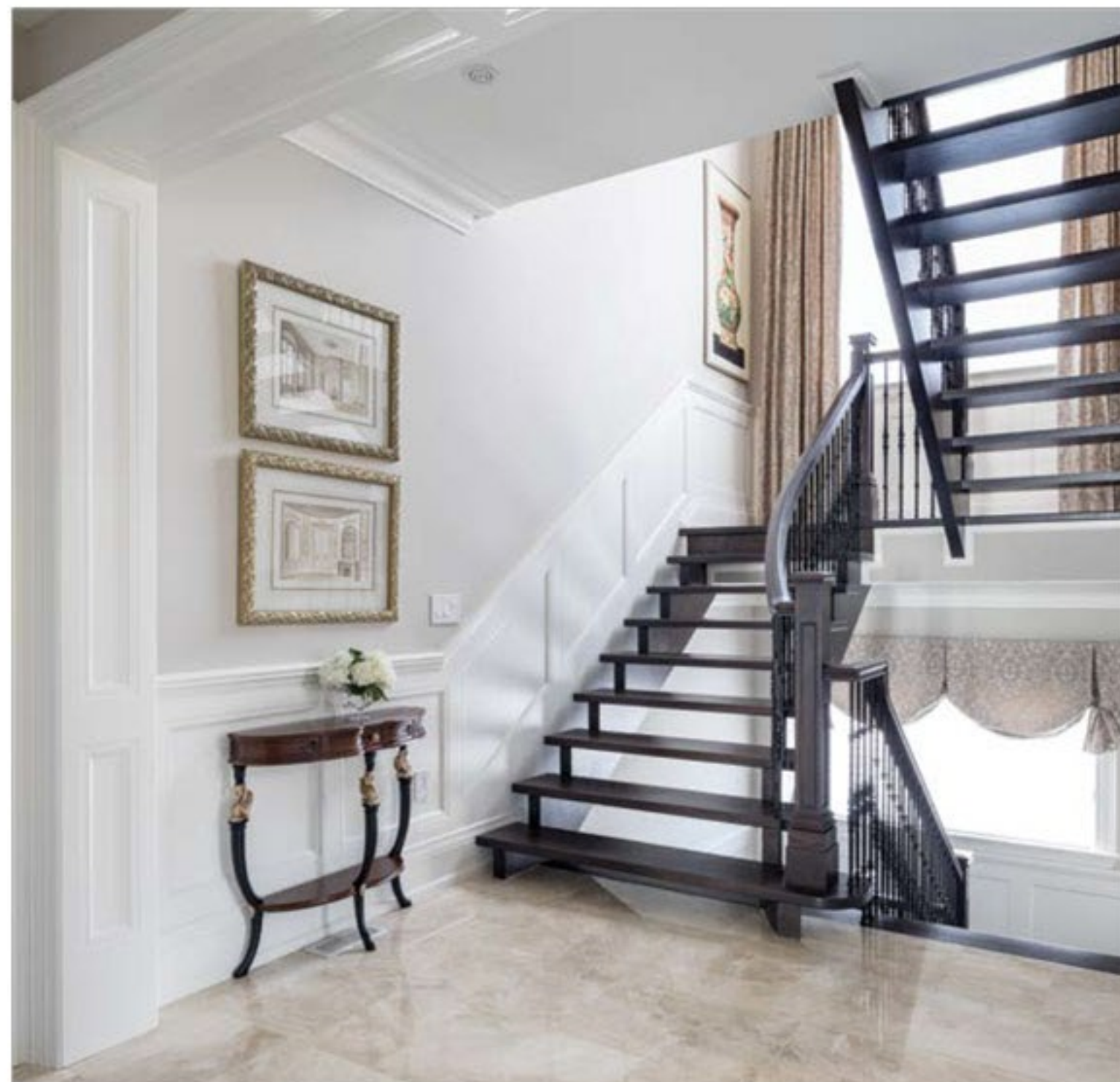
In the dining room, hints of red and blue in the striped chairs keep the room from feeling too formal. The waffle ceiling adds elegance, as does the floral rug and shimmering chandelier. The drapes, made of European silk-embroidered fabric, float over the windows and add softness.

Part of the home's beauty is the perfect proportions that allow the floorplan to flow easily from one room to the next. In tackling the finishing touches, the size of the furnishings and light fixtures were carefully considered so that everything stayed to scale. The natural flow is enhanced by the repetition of colours and materials from one room to the next along with tones and fabrics in similar colours and varying textures.

In the upper level, a reading room springs to life with citron. An oversize, tufted settee with rolled arms is piled with a collection of grey and yellow pillows begging to be sunk into. A striking trellis-patterned rug is anchored by playful textures in the ottoman and bench.

*Continued on page 28*

**TOP LEFT & TOP RIGHT:** Beautifully appointed guest rooms are ready for visitors and grandchildren.  
**RIGHT:** The open staircase is a stunning focal point in the centre of the home. Exquisite millwork adds elegance.  
**OPPOSITE:** A formal living room is layered with luxe accents, like gold trimmed tables, custom drapes and sumptuous pillows.







**LEFT:** The master bedroom is soft and pretty with layers of textures and patterns. **BELOW LEFT:** The integrated vanity area is alive with natural light. **BELOW:** Soft and romantic, the tub is a lovely haven to soak worries away.



In the master bedroom, adding mirrors over nightstands is a clever way to add interest and additional light. Soft curves and muted patterns create a tranquil space. The en suite is a spa sanctuary with a free-standing tub and large shower with steamer. "It's perfect for relaxing after a long day," says Patricia.

No detail was neglected, including the guest bedrooms. One, dubbed the Paris room, embraces soft blues and natural hues while in the other, red florals take centre stage.

The home blends modern furniture, fabrics and lighting with neutral backdrops and soft, sweeping curves, for an unassuming, refined style. The result is a cosy, comfortable place to call home. **OH**

